

2002/2003 SERVICE PLAN STARTING WITH THE HOME GROUP

*The Al-Anon Family Group Service Plan
is a tool for every Al-Anon member.*

The goal for 2002/2003 is to involve members and to grow as a fellowship. Each member is invited to review his or her recovery through the home group. If each individual takes the responsibility for becoming involved in the service of Al-Anon, our membership can evolve into one that continues to spread the joy of recovery.

In the Al-Anon Family Groups many of us have found a home. The initial welcome we receive holds a special place in our individual memories.

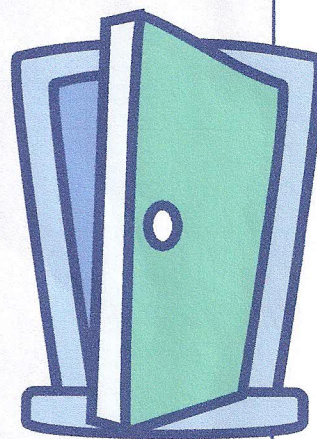
Members often refer to their home group as a place to come home to, a place to belong, and to join in. The home group is the meeting where we are missed when we are not there. It is a safe place to bring our hopes, fears, joys, and tears. It is the place we gravitate toward to be comforted, nurtured, and congratulated.

By regular attendance, we establish friendships; encourage and acknowledge growth; and notice the changes in attitude, appearance, voice, and tone. We notice that our sharing changes from self-directed feelings to understanding and acceptance. The home group is the place where we are loved and accepted no matter what.

Members in service usually start by serving Al-Anon in their home group and may move on to the district, Al-Anon information service (AIS), and area.

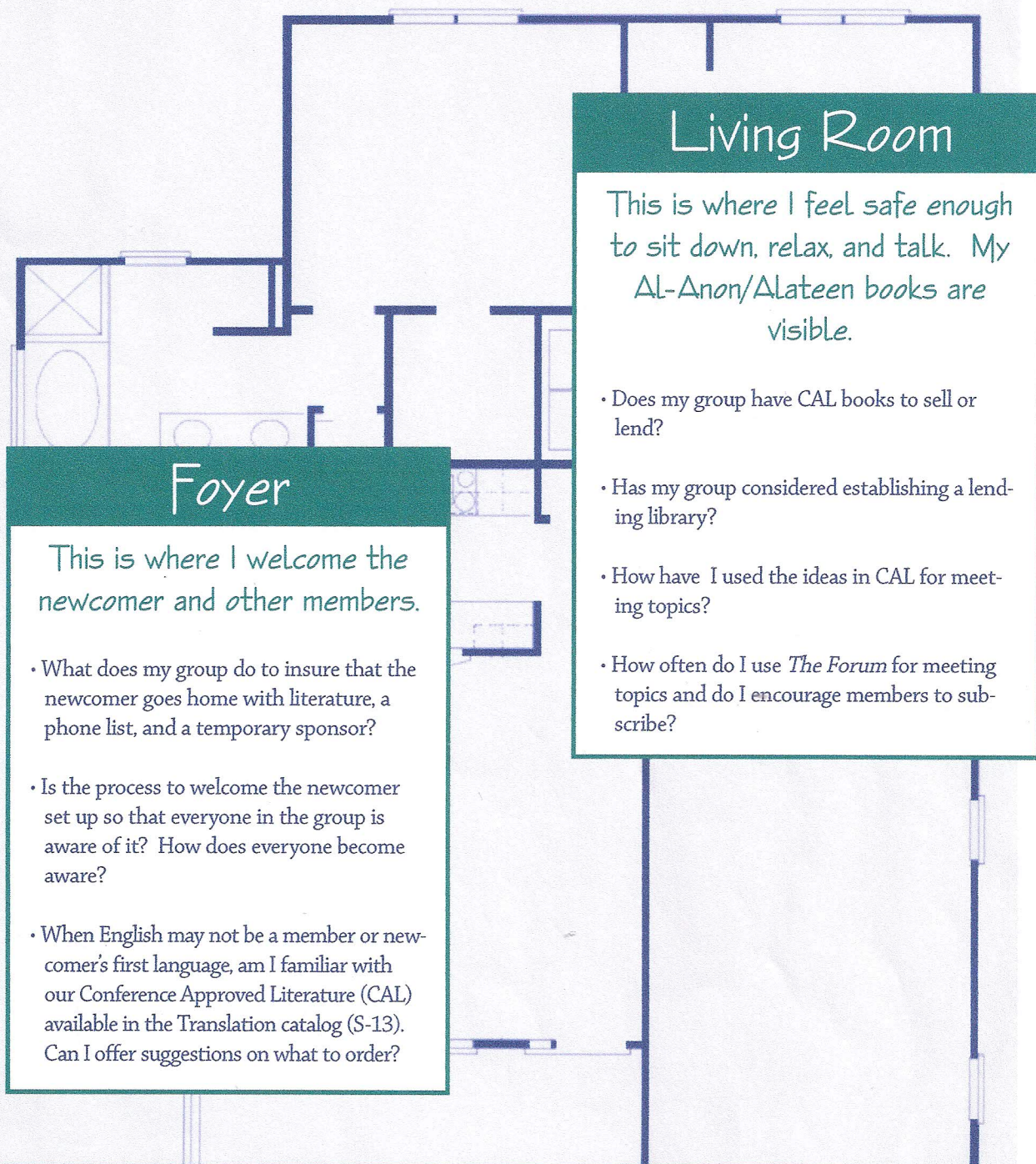
This year's service plan takes individuals through the rooms of a home. The following questions are suggested, feel free to adapt them, or develop your own method for putting the plan to work.

Please use the enclosed evaluation form to share your experiences using this plan with the World Service Office (WSO). The evaluation is a self-addressed tri-fold return form and all it needs are your thoughts and a postage stamp. It can also be used to order service material focused on group activities and recovery. We look forward to hearing from you.



This plan may be photocopied, translated, and distributed in your area as needed.

2002-2003 Service Plan - Starting with the Home Group



Every home has a foundation and AL-Anon's foundation is built on the Steps, Traditions, and Concepts of Service.

2002-2003 Service Plan - Starting with the Home Group

Kitchen

This is where I have utensils, ingredients, and ideas to prepare menus. I welcome my friends into the kitchen. When I know someone well, I invite him or her into my heart where we can help each other learn how to work the program. Intimate discussions and explanations can happen in here.

- How have I benefited from being a sponsor and from being sponsored?
- How can I acknowledge and thank the officers of my group for their service?
- Does my kitchen bulletin board include important phone numbers and meeting dates for district meetings and assemblies?

Group Representative
Current Mailing Address—CMA
Secretary/Treasurer
District meeting
Assembly

- Who explains the following?
Duties of group officers
Quarterly Appeal letter from the WSO (Hint: It's for individuals, not the group.)
AIS meeting

Dining Room

This is where food for thought and recovery is often discussed and reviewed.

- Is volunteering for a service position included as a part of my personal recovery health plan?
- Are the friendships developed in service the icing on the cake for me?
- When have I found laughter around the tables of service?

Home Office

This is a place where the bills get paid and addresses are updated.

- Has the group's current mailing address (CMA) been reported, changed, and/or updated with WSO, area, district, and AIS?
- Has the group used the *Seventh Tradition* pamphlet (S-21) to help set priorities at the business meeting on how to distribute the money?
- Do I know where the group's *Al-Anon/Alateen Service Manual* (P-24/27) is and when to refer to it?
- Has my group ordered the customized group binder (M-59) from the WSO? (M-60 - Alateen)

2002-2003 Service Plan - Starting with the Home Group

Kids Room

The place where support and comfort is given to the younger members.

- Does my group know where the nearest Alateen group is?
- Has the group ever invited an Alateen speaker?
- How do I let newcomers know about the value of the Alateen program?
- How does my group acknowledge Alateen sponsors at the Al-Anon meeting?
- Does my Al-Anon group welcome younger members when there are no Alateen meetings?
- Has my group considered starting an Alateen meeting at the same time?

Guest Room

The place where hospitality is shared.

- Do I suggest that we invite the district representative (DR), delegate, or area coordinators to our meeting?
- Do I suggest that we invite Al-Anon speakers to our meeting?
- Has my group ever heard or responded to requests for help from the AIS?
- Has my group ever hosted an open meeting for professionals?

2002-2003 Service Plan - Starting with the Home Group

Bedroom

The place where I can meditate, sleep on new ideas, rest, and ask for guidance.

- Do I pick up the phone and call my sponsor regularly to get help with specific problems and situations?
- How have I used a service sponsor?
- Do I spend quiet time in my room meditating, praying, and writing?
- Have I asked for spiritual guidance before I volunteer to serve Al-Anon?

Porch

The place where I think about the people I have yet to visit and meet.

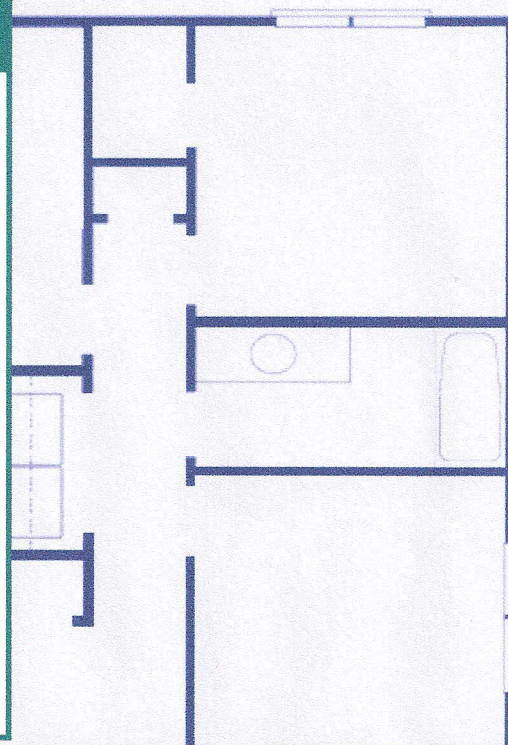
- Does my group allow time for the GR to share reports after assembly, district meetings, or from the mailings sent to the group on a regular basis?
- Does anyone in my group carry the message of hope to correctional facilities, schools, and professionals?
- Of the following projects, which one can I suggest to my group?
 - Take old issues of *The Forum* magazine to doctor's offices
 - Give your doctor, lawyer, clergyman, school counselor a subscription to *The Forum* and a local meeting list for their waiting rooms
 - Provide copies of *Courage to Change* (B-16s) in soft cover to correctional facility libraries
 - Take a meeting to a correctional facility or detention center
 - Donate Al-Anon books to public, church, and institutional libraries
 - Write to members of the professional community—teachers, doctors, lawyers, judges, school nurses, counselors, and others
 - Place poster in our local area with meeting information
 - List our group in the local media community calendar

2002-2003 Service Plan - Starting with the Home Group

Front Yard

The space just outside my home,
where I make the transition to the
outside world.

- How do I share my service enthusiasm with my group, my sponsor, members I sponsor, members in my group, and newcomers?
- How has my attendance at district workshops, area assemblies, Regional Service Seminars (RSS) helped me, my group, district, area?
- Has the booklet *When I Got Busy, I Got Better* (P-78) enhanced my recovery?
- How can I insure that my home away from home can be any Al-Anon group in the world?



My home group is "MY HOME
SWEET HOME"



Al-Anon Family Group Headquarters, Inc.
1600 Corporate Landing Parkway
Virginia Beach, VA 23454-5617
Phone: (757) 563-1600 Fax (757) 563-1655
e-mail: wso@al-anon.org

This plan may be photocopied, translated, and distributed in your area as needed.

Evaluating the 2002 Service Plan Starting with the Home Group

This is the first time our group has seen the WSO Service Plan ☐ Yes ☐ No

Please write to the WSO and share your service experiences using this plan. Why is your group your HOME SWEET HOME?

This image shows a single sheet of white paper with horizontal blue ruling lines. The lines are evenly spaced and run across the width of the page. There are no vertical margin lines or other markings present. The paper appears to be a standard piece of stationery used for writing or drawing.

In Al-Anon I serve: (Please pick one) ☐ My group as _____ Position ☐ My district as _____ Position ☐ My area as _____ Position

Ordering Made Easy

<u>Quantity</u>		<u>Price \$</u>	<u>Total Cost</u>
_____	Taking a Group Inventory (G-8)	10/\$1.00	\$ _____
_____	2002/2003 Service Plan (S-39)	Free	
_____	Literature Catalog (S-15)	Free	
_____	CAL in Translation (S-13)	Free	
_____	Seventh Tradition (S-21)	Free	
_____	When I Got Busy, I Got Better (P-78)	\$2.50	\$ _____
_____	Customized Group Binder—	\$15.00	\$ _____
	Al-Anon (M-59)		
	Group Name _____		
	Group ID# _____		
_____	Al-Anon/Alateen Service Manual (P-24/27)	\$ 4.00	\$ _____
	Subtotal		\$ _____
	Add 7% for postage and handling (Minimum postage required \$1)		\$ _____
	Contributions to WSO (Members only)		\$ _____
	Total Amount Enclosed		\$ _____

Make checks payable to AFG, Inc.

Mail your order to:
AFG, Inc.
1600 Corporate Landing Parkway
Virginia Beach, VA 23454-5617

Or fax your order to: (757) 563-1655.

Visa, Mastercard, American Express and Discover accepted. Please provide us with the information below.

☐ Visa ☐ Mastercard ☐ Discover ☐ American Express

Exp. Date _____

Card Number _____

Telephone _____

Signature _____

REQUIRED ON ALL CHARGE ORDERS

Canadian payments may be made in Canadian funds at the U.S. dollar equivalent.
Please allow 3 weeks for delivery

SEND TO: (PLEASE PRINT)

Name _____

Mailing Address _____

City/State/Province/Zip/Postal Code _____

CHECK TOTAL	DATE	ORDER #
DO NOT WRITE IN THIS SPACE		

DO NOT SEND CASH

NO C.O.D. ORDERS